

## Points of interest

### Ferry Boat Inn

Dating from the late 15th century, the Ferry Boat Inn was originally built as cottages, part of the estate buildings of the nearby manor house. In 1591 Queen Elizabeth 1 granted the manor to Christopher Osborne, MP for Helston whose father Peter Osborne owned South Fambridge Hall just across the river. A ferry ran across there until the late 1990s.



### Butt's Cliff

Regarded by geologists as one of the most important London Clay sites in Britain, fossils can be found on the beach shingle beneath the eroding cliff. Numerous fossil bird bones, fish and shark teeth have been found since the site was discovered in the early 1970s, but if you have good eyesight and a lot of patience there may still be some left!

### Creeksea wartime history

Creeksea played an important role in World War 2, with a naval base at Creeksea Place where 700 men were trained to use the 32 landing craft based in the Crouch ready for the 1944 invasion of France. The concrete slipway there was used for RAF fast Pilot Rescue launches which rescued shot-down aircraft and for motor torpedo boats.



### Burnham architecture

There are many Listed buildings in town, including the Royal Corinthian Yacht Club, designed in 1931 by modernist architect Joseph Emberton. The Clock Tower was built in 1877 with a fish-scale tiled roof and is dedicated to the memory of Laban Sweeting, a well-known local oyster merchant and philanthropist.

## Refreshments

|                     |              |  |
|---------------------|--------------|--|
| Parlour Cafe        | 01621 785292 | <a href="http://parlour-cafe.co.uk">parlour-cafe.co.uk</a>           |
| Ground Coffee House | 07724732295  | <a href="http://groundcoffeehouse.co.uk">groundcoffeehouse.co.uk</a> |
| Bistro on the Quay  | 01621 781100 | <a href="http://bistroonthequay.com">bistroonthequay.com</a>         |

More locations available at [visitmaldondistrict.co.uk/food-and-drink](http://visitmaldondistrict.co.uk/food-and-drink)

## RIVER CROUCH WALK

### Coastal Walk

This linear riverside walk starts from North Fambridge station, taking you eastward towards Burnham-on-Crouch, from where you can catch a train to return



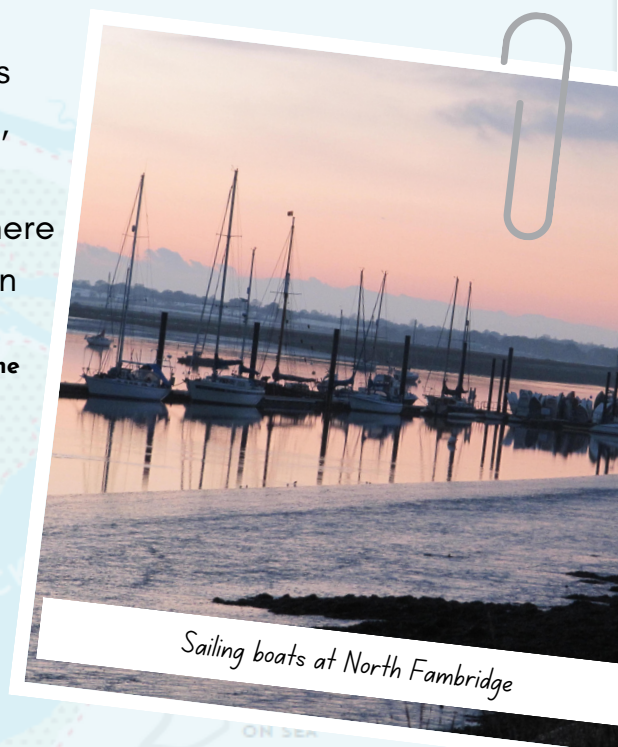
**Long but level linear walk. Some muddy sections after rain**



**4 hours - main walk  
2.5 hours - short cut**



**10.2 miles - main walk  
5.6 miles - short cut**



*Sailing boats at North Fambridge*

## How to get here



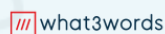
**North Fambridge railway station, Station Road, North Fambridge CM3 6NP**



**Trains from South Woodham Ferrers or Wickford (change for London Liverpool Street)**



**OS Explorer 176 | TQ 857 978**



**[improle.beads.birdcage](http://improle.beads.birdcage)**



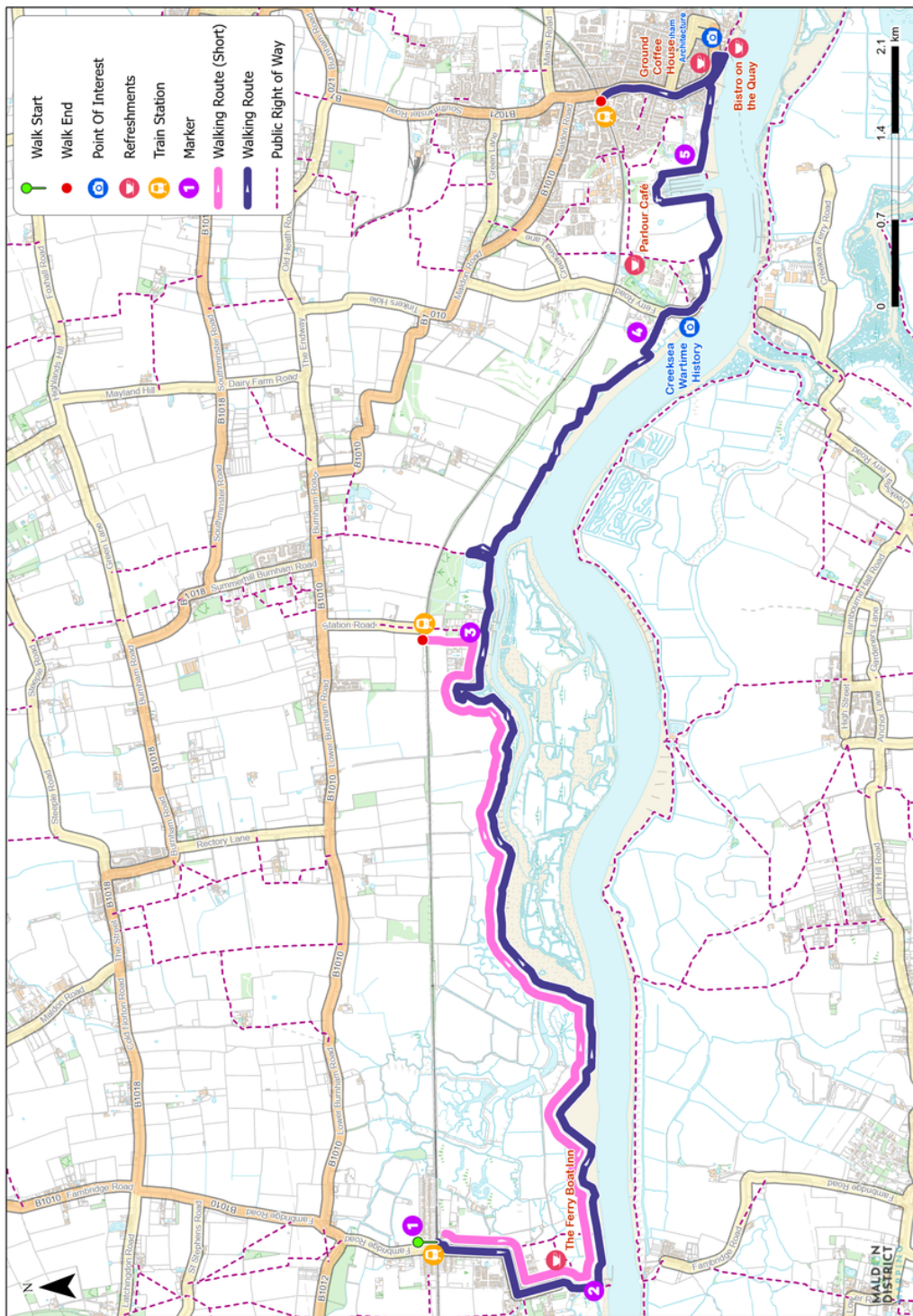
## Discover the Maldon District



[visitmaldondistrict.co.uk/walks](http://visitmaldondistrict.co.uk/walks)



[@visitmaldondistrict](https://www.instagram.com/visitmaldondistrict)



## Route

1. Start the walk from **North Fambridge station** (car parking charges apply - register in advance at [www.paybyphone.co.uk](http://www.paybyphone.co.uk) and pay by phone on arrival). Walk down Station Approach and turn left onto Fambridge Road (the pavement is on the opposite side of the road). In just over  $\frac{1}{4}$  mile, turn right onto The Avenue. After 350 yards, turn left into **Ferry Road**. Continue down Ferry Road, passing the **Ferry Boat Inn** on your left. After the pub, the road bends to the right; at the junction with the access road into the **Fambridge Yacht Haven** on your left, take the footpath which runs alongside Ferry Road on the grass embankment. Continue on this path for nearly 300 yards, then turn left (past the boat ramp and the jetties and the sailing barge **Kitty**) to reach the seawall footpath.
2. Turn on to the seawall, going past the small marina. Continue along the sea wall for four miles. Along the way, you will pass **Bridgemarsh Island** (which is uninhabited saltmarsh); at this point, there are good views of the hilltop village of **Canewdon** on the opposite bank of the river Crouch. After four miles, you will reach **Althorne**.
3. For a **shorter version of the walk**, go down the steps by the marina car park (just before a stile on the sea wall) and walk up the unmade road (between houses) to **Althorne railway station**. From here, you can get a train back to North Fambridge station. For the full length walk, go over the stile on the seawall and continue ahead. After 1.3 miles, there is a small deviation away from the river, when you encounter **Butts Cliff** (simply referred to as **The Cliff** on Ordnance Survey maps); here the path veers off to the left and climbs to the top of the cliff. On a day with good visibility, there are excellent views to the east from here of the Crouch Estuary, Wallasea Island and Creeksa, and towards the Crouch Valley and Althorne to the west.
4. Three quarters of a mile after descending The Cliff, the seawall path ends as you near **Creeksa**. Turn left down the steps, go through a gate and turn right onto the field edge path. After 250 yards, turn right onto the road, which rejoins the seawall just past the **Slipway** (after a further 300 yards). Continue on the seawall past Creeksa. You will soon reach the western edge of **Burnham Yacht Harbour**. Walk around the edge of the marina, passing in front of the buildings, then walk south to rejoin the seawall .
5. Continue ahead, with Burnham-on-Crouch's **Riverside Park** to your left and the river to your right. There are some interesting houseboats here. You soon join the walkway along Burnham Quay, continue along as it twists and turns past pubs, cafés and houses. When you have passed **Ye Olde White Harte** coaching inn and just before you reach the **Anchor Hotel**, turn left into Shore Road. On reaching the High Street (with the famous **Clock Tower** to your right), turn left and head up the High Street; as it bends right (near the library) it becomes Station Road. Two thirds of a mile after turning left onto the High Street from Shore Road, you will reach Station Approach (shortly after passing the Co-op supermarket). Go left here, soon reaching Burnham-on-Crouch railway station. Wait for a train here to take you back to North Fambridge, where the walk started.